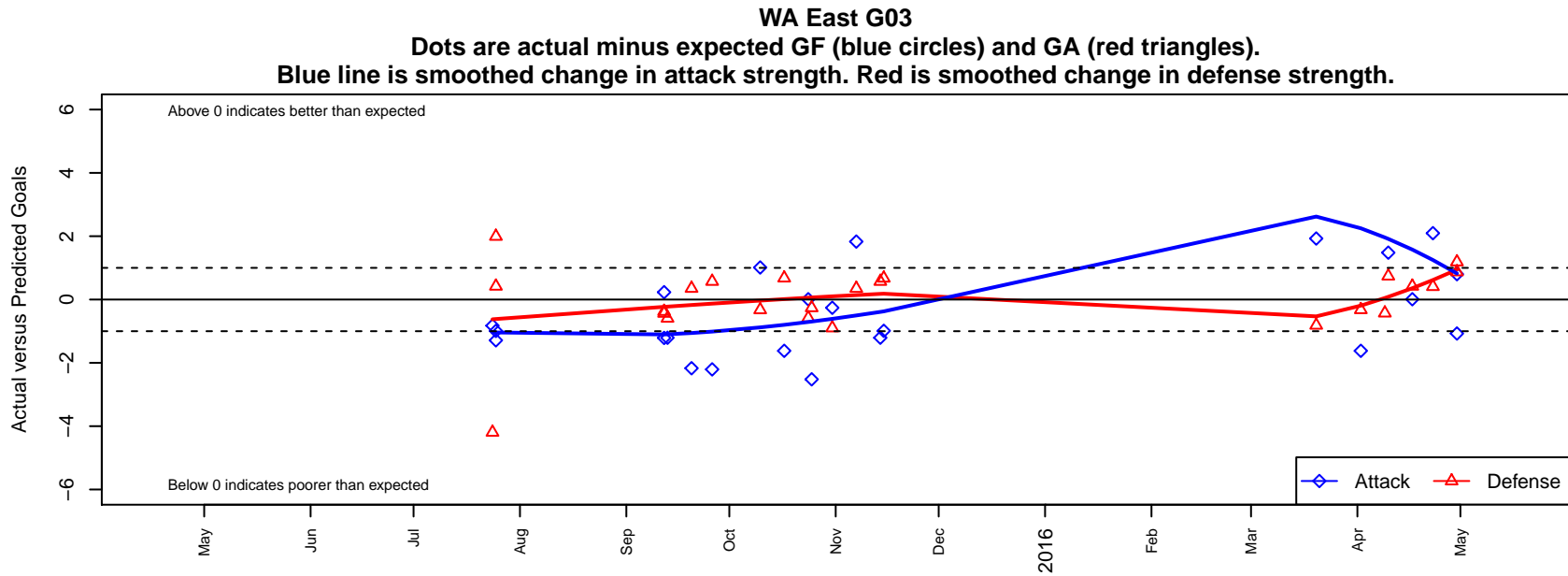


WA East G03

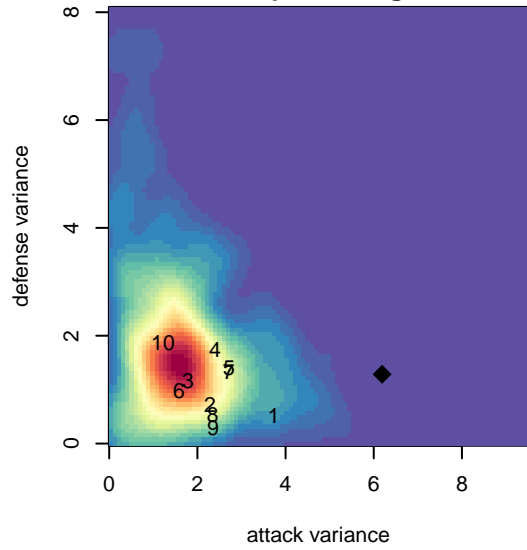
Washington East SC
 Spokane, WA
 G03 total strength=782
 attack=1.13 defense=0.78
 fall league = PSPL–Inland Div 1 U12
 spr league = Spr PSPL–Inland Div 1 U12
 notes= Peroff 2014–5

alt names used:
 Washington East SC Peroff
 WASHINGTON EAST WE U12 GIRLS PEROFI
 WASHINGTON EASTPEROFF G03
 Washington East SC Peroff 04

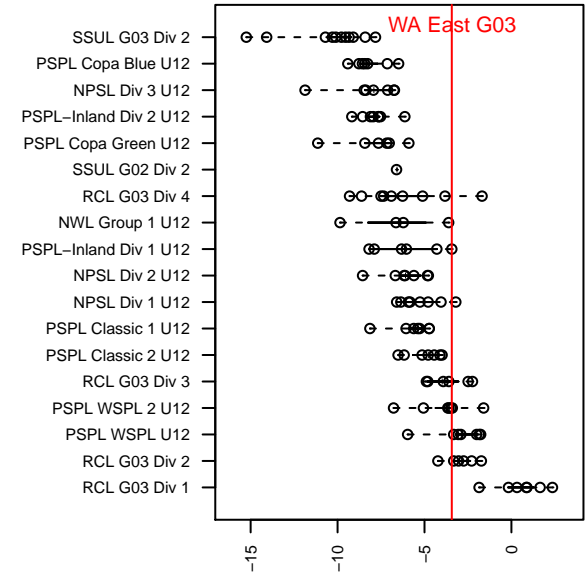
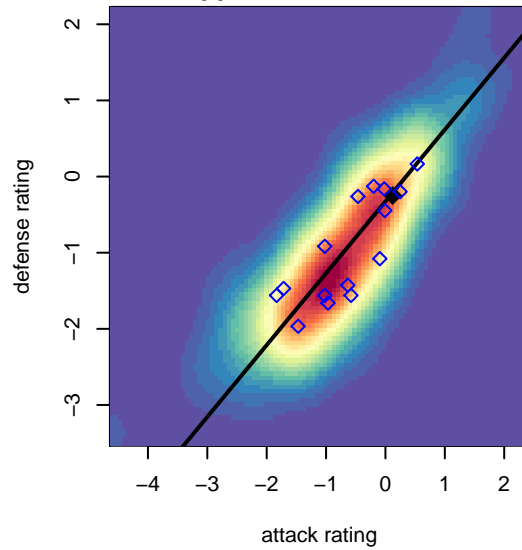
Venues played:
 2015 River City Cup U–12 Gold U12
 2015 Pend Orielle Cup Gold
 2015 PSPL–Inland Div 1 U12
 2015 Spr PSPL–Inland Div 1 U12



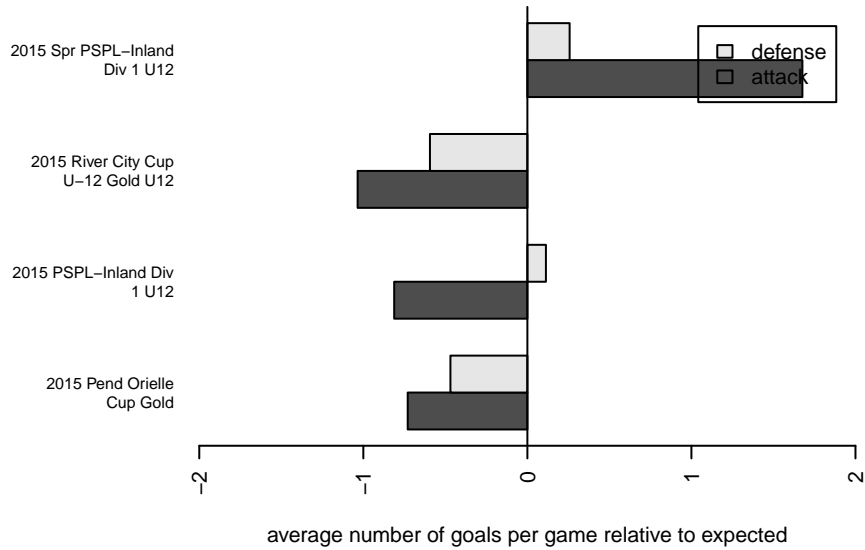
**attack and defense variance (black dot)
relative to other teams
and top 10 in region**



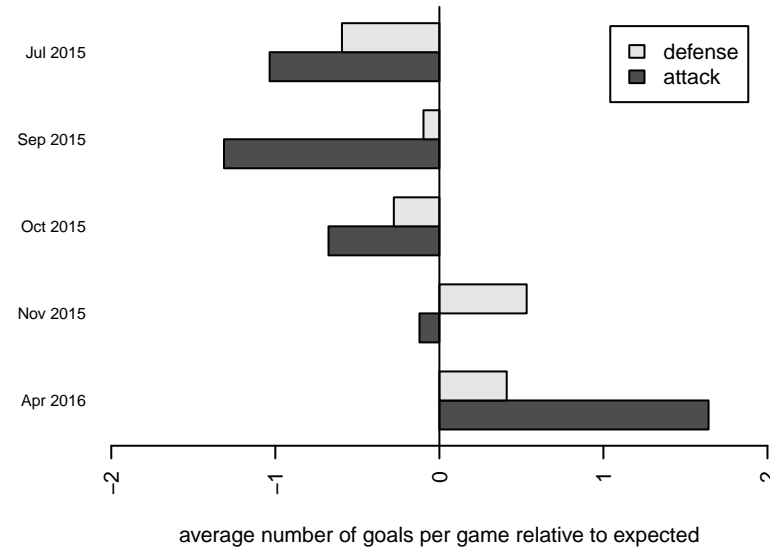
**attack and defense rating
relative to others at age
and all opponents in last 13 months**



Performance relative to 13 month average



Performance relative to 13 month average



| ate | home | | away | | venue | pred.home | pred.av |
|--------|--------------------------------------|----|--------------------------------------|---|-----------------------------------|-----------|---------|
| -04-30 | WA East G03 | 0 | Valley Thunder SC G03 | 0 | 2015 Spr PSPL-Inland Div 1 U12 | 1.07 | 1.19 |
| -04-30 | WA East G03 | 5 | Three Rivers SC Black District G03 | 0 | 2015 Spr PSPL-Inland Div 1 U12 | 4.20 | 0.87 |
| -04-23 | WA East G03 | 6 | ASE Royal G03 | 0 | 2015 Spr PSPL-Inland Div 1 U12 | 3.90 | 0.41 |
| -04-17 | FC Spokane Black G03 | 0 | WA East G03 | 4 | 2015 Spr PSPL-Inland Div 1 U12 | 0.42 | 3.99 |
| -04-10 | WA East G03 | 6 | Endeavour Soccer Academy Wallace G03 | 0 | 2015 Spr PSPL-Inland Div 1 U12 | 4.52 | 0.74 |
| -04-09 | WA East G03 | 14 | Breakers Kalua G04 | 1 | 2015 Spr PSPL-Inland Div 1 U12 | 4.21 | 0.57 |
| -04-02 | Cheney Storm FC G03 | 1 | WA East G03 | 1 | 2015 Spr PSPL-Inland Div 1 U12 | 0.68 | 2.62 |
| -03-20 | Valley Thunder SC G03 | 2 | WA East G03 | 3 | 2015 Spr PSPL-Inland Div 1 U12 | 1.19 | 1.07 |
| -11-15 | CDA Sting Gold G03 | 1 | WA East G03 | 0 | 2015 PSPL-Inland Div 1 U12 | 1.67 | 0.99 |
| -11-14 | WA East G03 | 3 | Breakers Kalua G04 | 0 | 2015 PSPL-Inland Div 1 U12 | 4.21 | 0.57 |
| -11-07 | WA East G03 | 9 | Valor Cargile G03 | 0 | 2015 PSPL-Inland Div 1 U12 | 7.17 | 0.35 |
| -10-31 | WA East G03 | 1 | Ellensburg Fire G03 | 2 | 2015 PSPL-Inland Div 1 U12 | 1.26 | 1.10 |
| -10-25 | Endeavour Soccer Academy Wallace G03 | 1 | WA East G03 | 2 | 2015 PSPL-Inland Div 1 U12 | 0.74 | 4.52 |
| -10-24 | WA East G03 | 4 | FC Spokane Black G03 | 1 | 2015 PSPL-Inland Div 1 U12 | 3.99 | 0.42 |
| -10-17 | Cheney Storm FC G03 | 0 | WA East G03 | 1 | 2015 PSPL-Inland Div 1 U12 | 0.68 | 2.62 |
| -10-10 | WA East G03 | 2 | CDA Sting Gold G03 | 2 | 2015 PSPL-Inland Div 1 U12 | 0.99 | 1.67 |
| -09-26 | Breakers Kalua G04 | 0 | WA East G03 | 2 | 2015 PSPL-Inland Div 1 U12 | 0.57 | 4.21 |
| -09-20 | Valor Cargile G03 | 0 | WA East G03 | 5 | 2015 PSPL-Inland Div 1 U12 | 0.35 | 7.17 |
| -09-13 | WA East G03 | 2 | Nelson Selects 2004G | 2 | 2015 Pend Orielle Cup Gold | 3.21 | 1.41 |
| -09-12 | WA East G03 | 2 | Sandpoint Strikers G03 | 2 | 2015 Pend Orielle Cup Gold | 1.77 | 1.62 |
| -09-12 | WA East G03 | 4 | Flathead Force Green G03 | 1 | 2015 Pend Orielle Cup Gold | 5.21 | 0.56 |
| -07-25 | WA East G03 | 3 | FC Spokane Black G03 | 0 | 2015 River City Cup U-12 Gold U12 | 3.99 | 0.42 |
| -07-25 | Lethbridge FC Chargers 2004G | 0 | WA East G03 | 0 | 2015 River City Cup U-12 Gold U12 | 1.99 | 1.29 |
| -07-24 | SSC Shadow A G03 | 7 | WA East G03 | 0 | 2015 River City Cup U-12 Gold U12 | 2.81 | 0.82 |